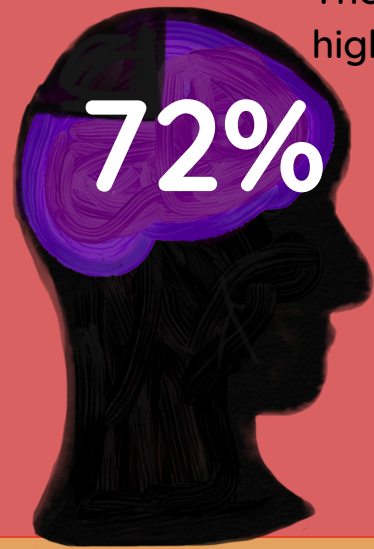



THE COVID-19 PANDEMIC IS UNEQUALLY IMPACTING THE LESBIAN, GAY, BISEXUAL, TRANSGENDER, QUEER (LGBTQ+) COMMUNITY

Mental health

The majority of participants in the Queerantime study had high levels of depressive symptoms (72%; CES-D-10)



72%

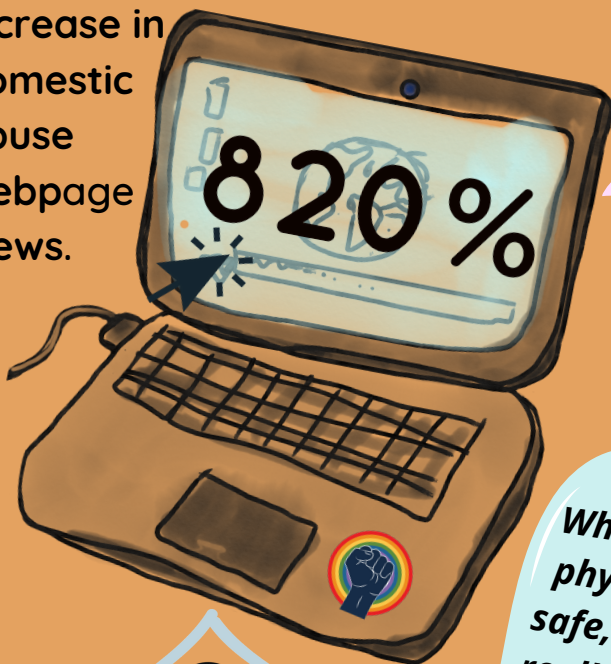
of  Queerantime study participants had high levels of depressive symptoms

[The COVID lockdown] experience is like reliving the isolation you knew when you were gay and could not tell and dare not tell anyone.

Safety and Abuse

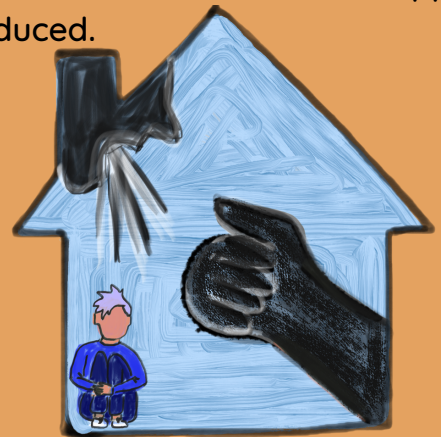
LGBT Foundation's Domestic Abuse Programme has seen unprecedented demand for support since lock down measures were introduced.

Increase in domestic abuse webpage views.



820%

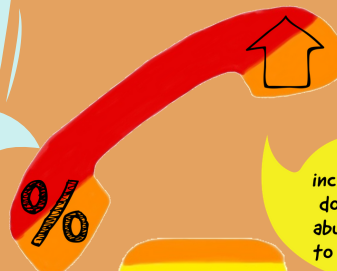
I've been subject to a much greater increase of online bullying during lockdown...



Compared to the 3 weeks prior, the period from 23 March - 12th April LGBT Foundation's helpline saw

Whilst I'm physically safe, it isn't really a safe space for me to be open about my identity...


340%
INCREASE
IN UNIQUE
VIEWS TO
DOMESTIC
ABUSE
WEBPAGES



INCREASE
IN CALLS DURING
THE PANDEMIC TO
LGBT FOUNDATION'S
HELPLINE

450%
calls about
biphobia

38%
increase in
domestic
abuse calls
to helpline

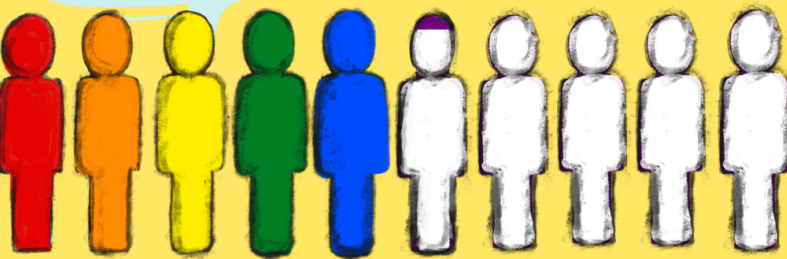
100% increase in
calls about
Transphobia

52%
increase in
calls about
homophobia

Access to Healthcare

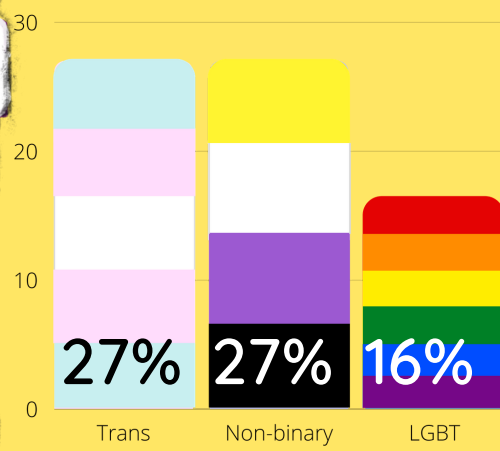
I'm worried about access to my hormone medication...

38% of non-binary and 37% of trans respondents had a medical appointment cancelled.

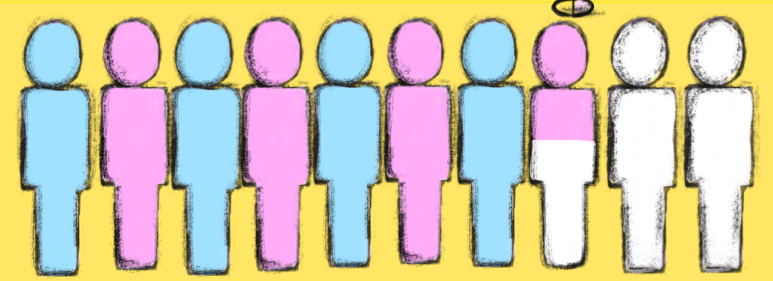


LGBT foundation Covid research report

found that **51%** of LGBTQ+ people were concerned about access to healthcare.



27% of trans and 27% of non-binary respondents said they were unable to access healthcare for non-COVID-19 related issues, compared to of all LGBTQ+ respondents.



75% of transgender and gender diverse respondents had concerns.

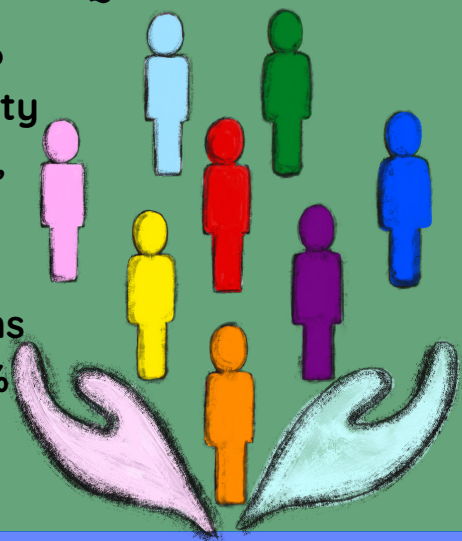


I had accidental unprotected sex and needed PeP urgently. I was unable to access it as all the local clinics are closed.

Support

64% OF RESPONDENTS WOULD PREFER TO RECEIVE SUPPORT FROM SPECIFIC LGBTQ+ ORGANISATION.

This rose to 71% of ethnic minority LGBTQ+ people, 69% of disabled LGBTQ+ people and 76% of trans people and 74% of non-binary people.



Investment in the community

0.2% of grants awarded to the Community and Voluntary Sector were to LGBTQ+ projects.



1 in 413 new research awards made by the UKRI COVID-19 research and innovation scheme were awarded to LGBTQ+ projects. 0.05% of the money awarded went to LGBTQ+ projects.